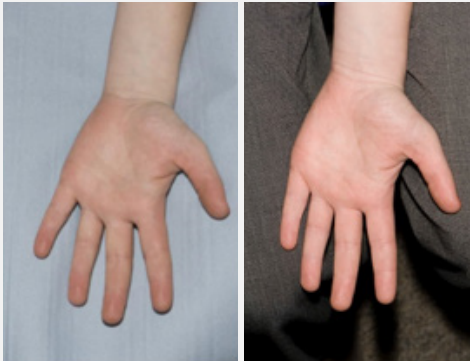


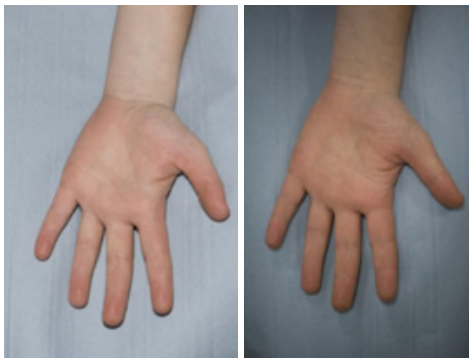
A guide to taking the best photographs for teledermatology



USE A BACKGROUND

1

- Backgrounds should be plain and unobtrusive, providing no distraction from the area of interest. A background is only needed if the subject area does not fully fill the frame.
- When applicable, a background should be placed in contact with the patient in order to minimise shadows.



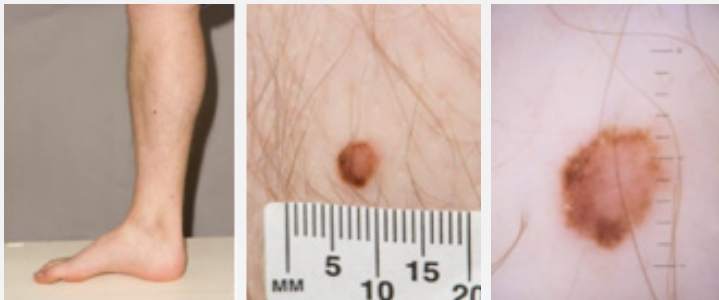
FLASH ON

FLASH OFF

GOOD OVERHEAD LIGHTING IS IDEAL

2

- General office light is not usually sufficient to light an image. Consider using flash.



ALWAYS TAKE AN ESTABLISHING IMAGE FOLLOWED BY A CLOSE UP

3

• If a patient has multiple areas of interest, then it is difficult to distinguish between pictures if only close ups are taken. For example, a mole on a patient's leg may look similar to one on the patient's arm, so by taking an establishing image it helps avoid any confusion.

- As well as the establishing image, a close-up image or a series of close-up images should be taken.
- If you are trained in using one and have access to a dermatoscope, it is helpful to also include a dermoscopic image of a lesion.



E: hello@consultantconnect.org.uk

T: 01865 261467

Consultant Connect | One St Aldates | Oxford | OX1 1DE





TAKE MORE THAN ONE IMAGE

4

- When taking a photograph, the camera needs to be parallel to the lesion.
- To demonstrate the size and shape of the lesion, you could consider taking additional image views, for example at an oblique angle.



OUT OF FOCUS

IN FOCUS

AUTOFOCUS ON THE LESION

5

- Images must be in focus for the dermatologist to review.
- Most smartphone cameras have a built in autofocus feature. You may need to wait a second for the autofocus to find the lesion. If your camera is too close to the lesion, this usually results in an out of focus photograph. Try zooming in from a bit further back.

ALWAYS REVIEW YOUR PHOTOS

6

Ensure your images have captured a good representation that allows a diagnosis to be made. Poor images mean the case will be returned with no diagnosis.

FOR E-RS/WCCG PATHWAY 5MB IS THE LIMIT

7

The NHS e-referrals system and Welsh Clinical Communications Gateway impose an image size limit of 5MB for attachments – which could prevent you sending multiple images. The Consultant Connect App does compress each image automatically for you to help with this.

The Consultant Connect App is free to clinicians within participating healthcare areas and can be downloaded from the App Store or Google Play.

For more information about teledermatology, please contact us on 01865 261 467 or email hello@consultantconnect.org.uk

We would like to thank NHS Dorset and University Hospitals Bristol NHS Foundation Trust for their kind permission to use photos which we have included in this guide.

E: hello@consultantconnect.org.uk
T: 01865 261467

Consultant Connect | One St Aldates | Oxford | OX1 1DE

